

February 2026

Shemewé Collective

Cross Cultural Connections

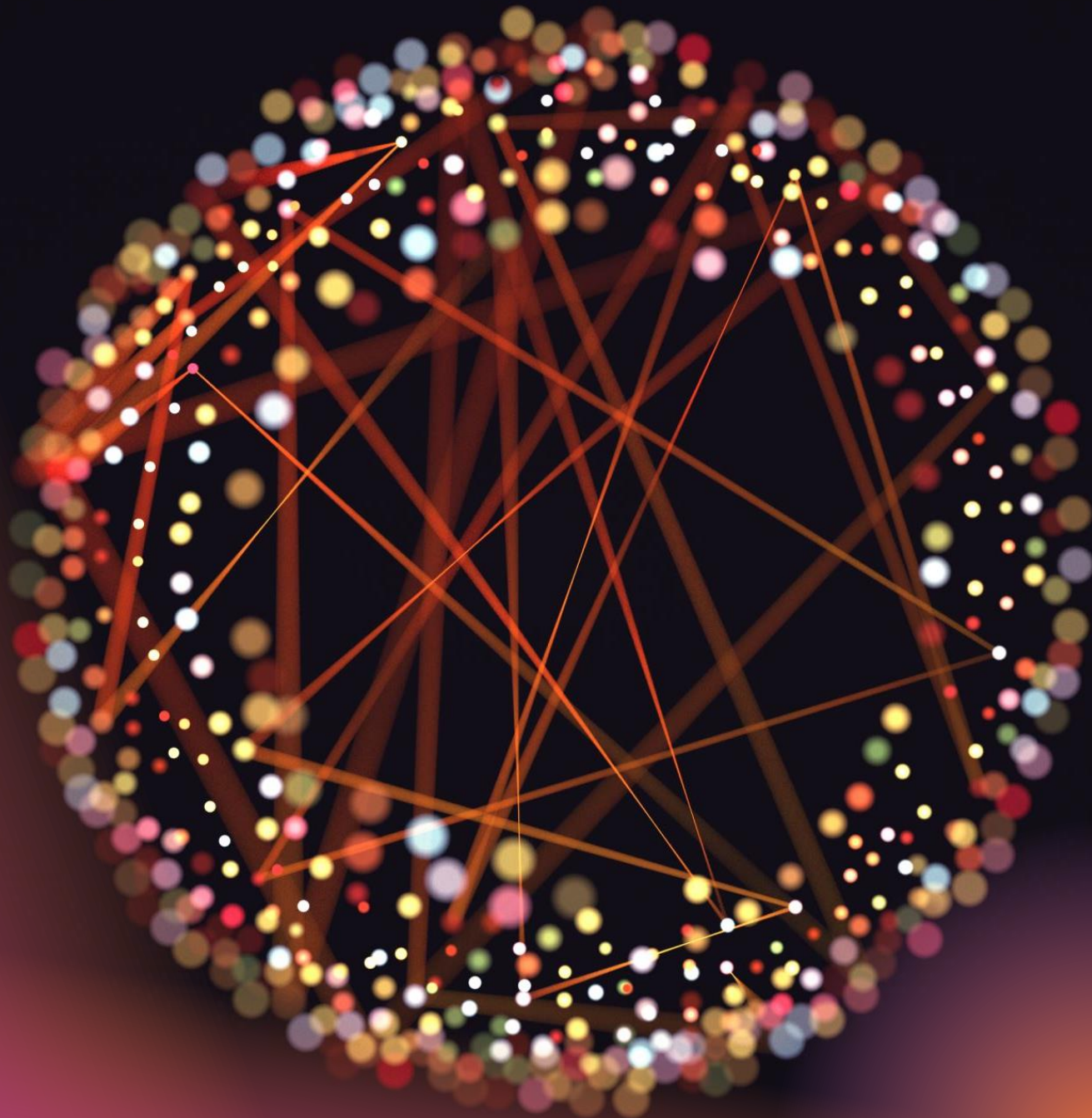


Cross Cultural Connections

A community circle for people who enjoy good company, cultural exchange, and thoughtful conversation.

An invitation to connect through dialogue, presence, and shared experience.





Why this Circle?

To bring people together across cultures in a way that feels human, grounded, honest and real.

Rather than debating ideas or defining identities, the circle offers space to meet culture as something lived, shaping how we relate, belong, and make sense of the world.



What We Do Together

We gather to talk, listen, reflect, and learn from one another.

The circle includes whole-group dialogue, small-group conversations, and shared activities that support connection, curiosity, and mutual understanding.

How the Circle is Held

The circle is lightly facilitated to support shared airtime, respect, and inclusion.

Agreements around boundaries and respect are introduced at the first gathering and developed together as a group.



Who This is For

This circle is for people who are curious about culture, open to learning, and willing to engage thoughtfully with difference. People from all walks of life and fields of work are welcome.

It is not a therapy or support group, and it works best when participants are resourced, self responsible, and able to contribute to a shared space.



Practical Details & Registration

Cross Cultural Connections runs as a free six-week, in-person season in Southport. Limited places are available.

Register your interest via the Shemewé Collective website www.shemewe.com.au



Meet Toni Hanna: Your Facilitator



Shemewé Collective, Principal,
Practitioner & Facilitator

Toni Hanna is the founder of Shemewé Collective and has spent over three decades working across community development, facilitation, and cross-cultural engagement. She approaches culture as a living foundation, something that shapes how we see, relate, and belong, and brings a deep personal love of learning from others and their cultural worlds.

Toni's work is grounded in lived experience, relational practice, and ethical dialogue, and she is known for holding spaces that are inclusive, well-bounded, and thoughtful, where people can explore complexity without pressure to perform, fix, or agree.

shemewe COLLECTIVE

Get in Touch
with Toni

www.shemewe.com.au

info@shemewe.com.au

+61 7 5509 4427

